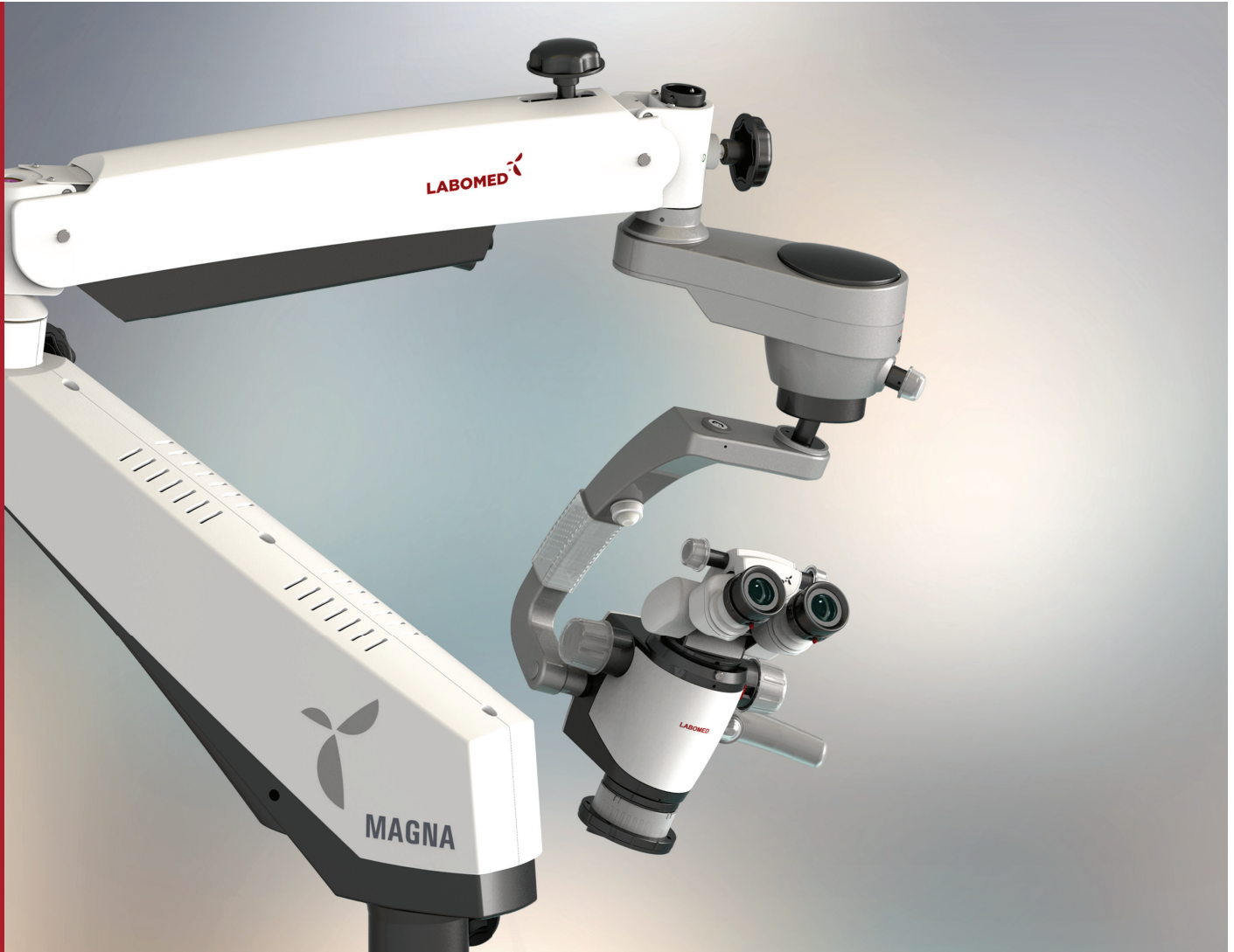


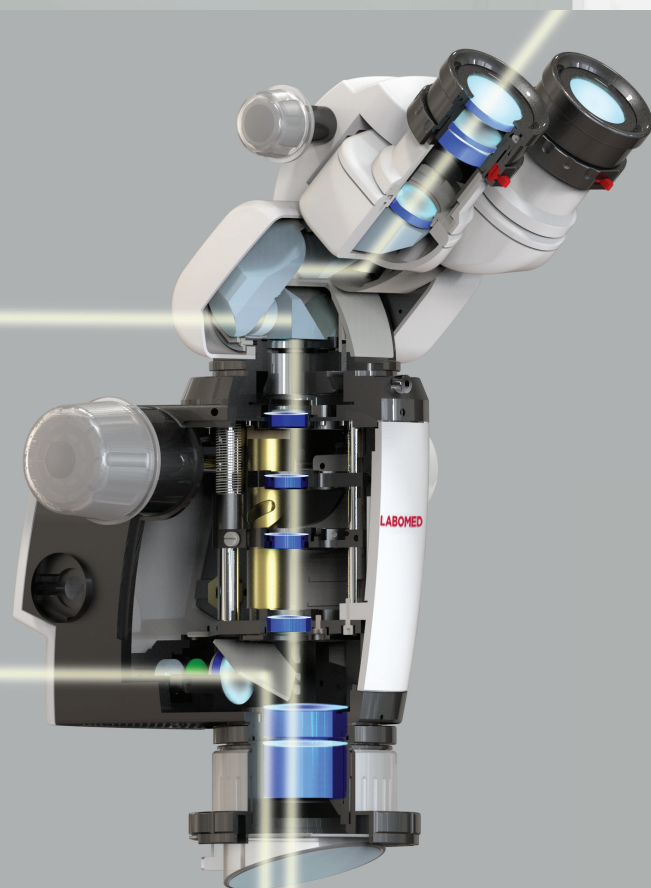
# MAGNA

OPERATING SURGICAL MICROSCOPE





## TOP PERFORMANCE BUILT FOR SMALL BUDGET



PRIMA M $\mu$  is configured for Dental surgeries utilizing a high performance tiltable observation head and *NuVar™* CMO with its focal length variable from 300mm to 400mm. This ergonomic arrangement facilitates superb imaging and comfortable working posture most suitable for Dental procedures.

PRIMA M $\mu$  provides an unmatched performance through the benefits of optimized LED illumination system and an apochromatic magnification changer. accessories, dental surgeries have never before experienced such high definition images leading to best results.

The Prima M $\mu$  comes equipped with an the most vivid and honest images in its class. This is achieved with LABOMED's proprietary *MaxLite™* coatings that provide highest efficiency in transmission and reflection through the entire visible spectrum. *MaxLite™* renders optics with excellent anti-fungal, anti-fog and scratch resistant properties.





# PROGRESS THROUGH INNOVATION



## 150-180 words

With its lower center of gravity stand for perfect balance and vibration free viewing, PRIMA M $\mu$  is ideal for space-constrained practices. Compact floor stand, wall mounts and table mounting options are available. PRIMA mu can be configured for every need of yours to provide best convenience and results.

To address digital documentation needs, a host of adapters, beam splitters, cameras from LABOMED *ProLine* series are offered. In addition, LABOMED's iVu multi-functional imaging module is available for plug and play needs in training centers.

A carefully selected LED and condenser optics provide a color temprature of 3700K. This *NoHeat* system is practically maintenance free with 50,000 hours of working life.

*An ergonomic Rotoplate and Extender kit (optional inclined beam splitter available) eliminates neck craning, making it comfortable to view hard-to-see regions of the mouth from a 9 and 3 o'clock seated position.*





# PERFECT VISUALIZATION – CLEAR DOCUMENTATION



With its lower center of gravity stand for perfect balance and vibration free viewing, PRIMA Mμ is ideal for space-constrained practices. Compact floor stand, wall mounts and table mounting options are available. PRIMA mu can be configured for every need of yours to provide best convenience and results.

A carefully selected LED and condenser optics provide a color temprature of 3700K. This *NoHeat* system is practically maintenance free with 50,000 hours of working life.



Clutch Handle



NuVar



DSLR Adapter

## 120-150 words

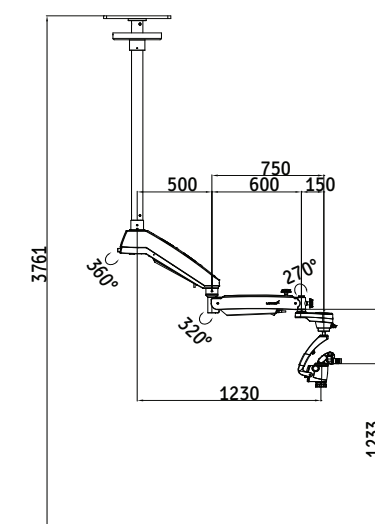
With its lower center of gravity stand for perfect balance and vibration free viewing, PRIMA Mμ is ideal for space-constrained practices. Compact floor stand, wall mounts and table mounting options are available. PRIMA mu can be configured for every need of yours to provide best convenience and results.

To address digital documentation needs, a host of adapters, beam splitters, cameras from LABOMED *ProLine* series are offered. In addition, LABOMED's iVu multi-functional imaging module is available for plug and play needs in training centers.

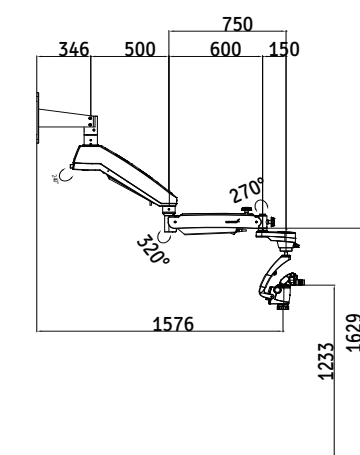
A carefully selected LED and condenser optics provide a color temprature of 3700K. This *NoHeat* system is practically maintenance free with 50,000 hours of working life.



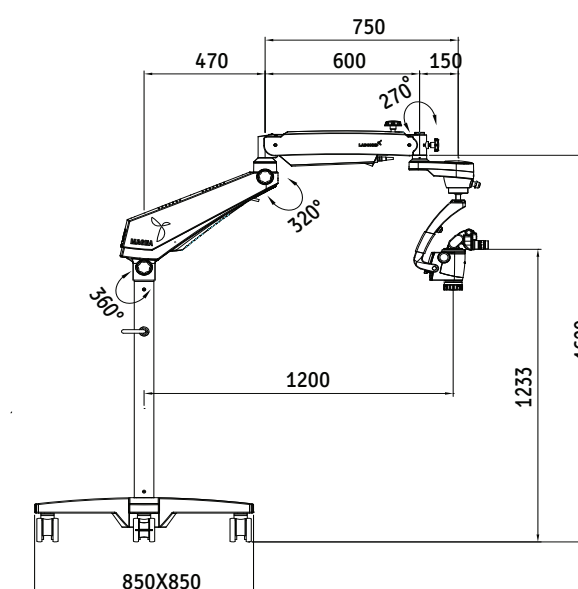
Table Mount



Wall Mount

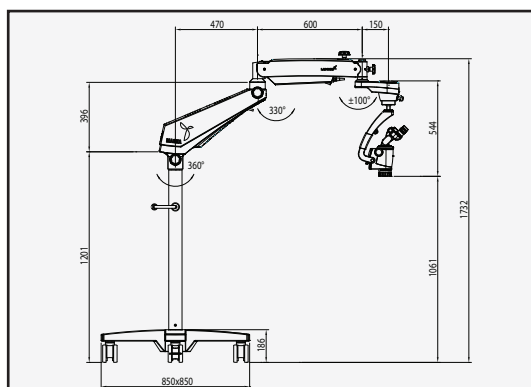


Floor Mount



# DENTAL MICROSCOPE

<b>Stand</b>	Robust, sturdy & vibration free stand with better stability on a cross base with four lockable castors
<b>Binocular tubes</b>	0-210° tiltable head configured with Rotoplate, DBSi (Double Beam splitter inclined), Double iris & DSLR Adapter
<b>IPD Adjustment</b>	50-75 mm
<b>Eyepieces</b>	WF 10X/18 mm lockable eyepieces, one with resolution markup to assist diopter adjustment
<b>Diopter Adjustment</b>	± 5mm with diopter lock
<b>Apochromatic Magnichanger</b>	Galilean Zom 1:6 with option of step Magnichanger
<b>Zoom range</b>	0.4-2.5
<b>Objective</b>	NuVar system with variable focal length adjustment from 300-400 mm with fine focusing mechanism
<b>Light Source</b>	50 watt LED, 90-240V
<b>Maximum wattage</b>	195 watts
<b>Built-in filters</b>	Yellow & Green
<b>Vertical movement of arm</b>	± 250 mm, power saver light cut-off at top parking position
<b>Microscope carriers</b>	ABA (Auto Balance Arm) with magnetic clutch for easy & drift free positioning
<b>Mounting options</b>	Wall mount & ceiling mount



**DESCRIPTION**  
PRIMA MAGNA

**CONFIGURATION**  
Dental

**CATALOG NO.**  
6129000



Labo America, Inc.  
920 Auburn Court  
Fremont, CA 94538

Tel: (510) 445-1257  
Fax: (510) 445-1317  
E-mail: sales@laboamerica.com

[www.laboamerica.com](http://www.laboamerica.com)



**LABOMED** 

Distributor

**SPECIFICATIONS**

6129000-796 1.0  
© Labo America, Inc. All rights reserved.